

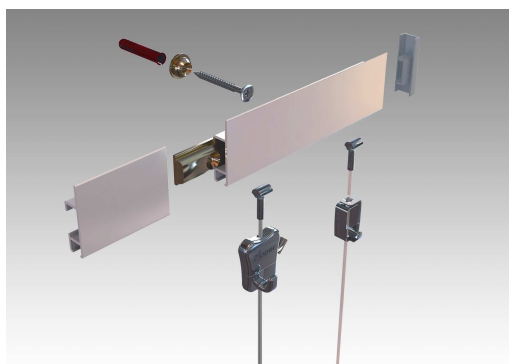


Cliprail MAX
Ceiling Flushmount
System

pictureframehanging.com
A division of Quadro Corporation
36 Harlow St., Worcester, MA 01605 USA
E-Mail: sales@pictureframehanging.com
Phone : 888-366-8646 / 508-845-9390
Toll-Free Fax : 1-877-865-3219

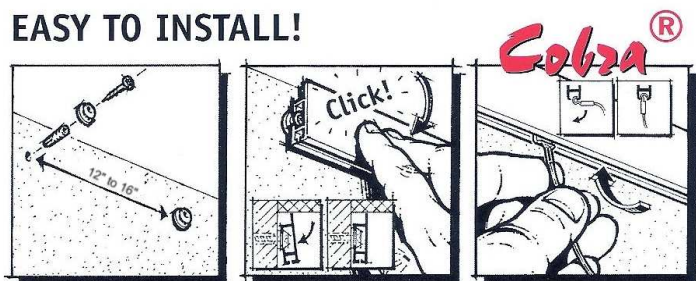
Eliminate holes in walls forever! Display, change, add, remove or re-position artwork instantly and effortlessly! The Cliprail MAX system is designed to be virtually invisible. It installs flush to ceilings quickly and easily.

Cliprail MAX : System Overview



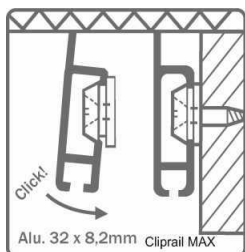
Brass buttons are fastened to the wall with screws, the track then snaps onto the buttons. Cables are supplied with Cobra® end fittings & simply rotate into or out of the track at any position. Track sections can be joined end to end for continuous runs of any length. Corner fittings can be used for 90° inner or outer walls, end caps for stand-alone sections. Cables slide in the track for horizontal adjustment. Hangers slide on the cables for vertical adjustment & lock into position when finger pressure is released. For maximum stability 2 hanging cables per frame are recommended (1 per top corner). Cliprail MAX has a wider front flange than the standard Cliprail in order to facilitate installation flush to ceilings.

EASY TO INSTALL!



Installation is a snap!
[1] Install brass mounting clips onto the wall. Screws (included) should be installed into 2x4's on frame walls. Anchors are provided for installation on masonry.
[2] Track snaps onto brass mounting buttons.
[3] Cables rotate into track & slide for horizontal adjustment.
[4] Hangers slide on cables for vertical adjustment.

Cliprail MAX Track Specifications and Details



- **Tracks sections are aluminum & stainless steel, 200 cm (approx. 78.75") long.**
 - **White track is powder coated aluminum**
 - **Grey track options are clear anodized aluminum or stainless steel.**
- **Track rated load capacity is 18 lb./linear foot (120 Lb./section).**
- **Cables are 2mm. in diameter. Clear Perlon (nylon) or braided steel.**
 - **Cable ratings >Clear Perlon 33 lb./cable. Braided steel 45 lb./cable.**
- **Hanger ratings > Smart Spring® @ 9 lb./hanger. Zipper® @ 22 lb./hanger.**

Cliprail MAX System Components

Part#	Description	Group	Part#	Description	Group
STA-RC10220	CliprailMAX 78.75" Track-White	Track	STA-CP10115	Cable Perion with Cobra End 59"	Cable
STA-RC30220	CliprailMAX 78.75" Track - Grey	Track	STA-CP10130	Cable Perion with Cobra End 118"	Cable
STA-RC60220	CliprailMAX 78.75" Track- Stainless St	Track	STA-SC10115	Cable - 59" steel with Cobra end	Cable
ACC0000019-01	Screw, Flat Head #6x1.25"	Track Accessory	STA-SC10130	Cable - 118" steel with Cobra end	Cable
ACC0000020-01	Anchor, Plastic #6x1.00-1.50"	Track Accessory	STA-HA30501	Hanger/Hook Zipper 22 Lb. Cap.	Hanger
STA-RY10100	Corner1x/Endcap2x CliprailMAX White	Track Accessory	STA-HA30900	Hanger/Hook SmartSpring 9 Lb. Cap.	Hanger
STA-RY30100	Corner1x/Endcap2x CliprailMAX Grey	Track Accessory			
STA-RD40100	Brass Mounting Button	Track Accessory			
STA-RD40200	Buttjoint Track Connector Cliprail	Track Accessory			

- Track orders include all installation hardware> Brass buttons, screws, anchors, butt joint connectors and 1 set of endcaps per order (not per track). Order additional endcaps separately for multiple stand-alone section installations.
- All product ships from our Worcester, MA warehouse.

For current pricing, to order and for multimedia information visit <http://pictureframehanging.com>