

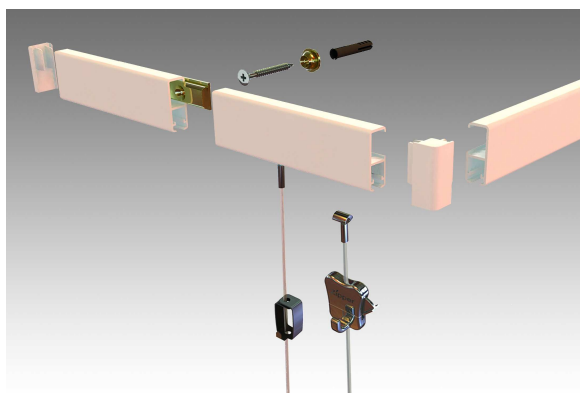


Cliprail2
High Capacity
System

pictureframehanging.com
A division of Quadro Corporation
36 Harlow St., Worcester, MA 01605 USA
E-Mail: sales@pictureframehanging.com
Phone : 888-366-8646 / 508-845-9390
Toll-Free Fax : 1-877-865-3219

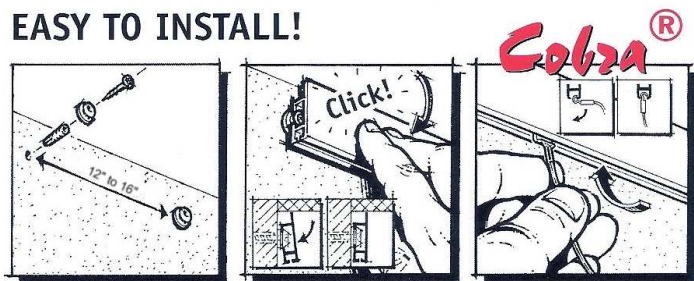
Eliminate holes in walls forever! Display, change, add, remove or re-position artwork instantly and effortlessly! The Cliprail2 system is designed to be virtually invisible. It installs quickly & easily on practically any flat wall.

Cliprail2 : High Capacity System Overview



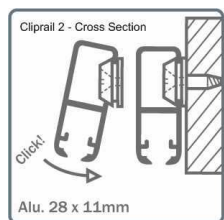
Brass buttons are fastened to the wall (typically but not necessarily at the ceiling) with screws, the track then snaps onto the buttons. Cables are supplied with Cobra® end fittings & simply rotate into or out of the track at any position. Track sections can be joined end to end for continuous runs of any length. Corner fittings can be used for 90° inner or outer walls, end caps for stand-alone sections. Cables slide in the track for horizontal adjustment. Hangers slide on the cables for vertical adjustment & lock into position when finger pressure is released. For maximum stability 2 hanging cables per frame are recommended (1 per top corner). Cliprail2 is a higher load version of the baseline Cliprail track.

EASY TO INSTALL!



Installation is a snap!
[1] Install brass mounting clips onto the wall. Screws (included) should be installed into 2x4's on frame walls. Anchors are provided for installation on masonry.
[2] Track snaps onto brass mounting buttons.
[3] Cables rotate into track & slide for horizontal adjustment.
[4] Hangers slide on cables for vertical adjustment.

Cliprail2 Track Specifications and Details



- **Tracks sections are extruded aluminum, 200 cm (approx. 78.75") long.**
- **White track is powder coated. Grey is clear anodized.**
- **Track rated load capacity is 32 lb./linear foot (200 Lb./section).**
- **Cables are 2mm. in diameter. Clear Perlon (nylon) or braided steel.**
 - **Cable ratings >Clear Perlon 33 lb./cable. Braided steel 45 lb./cable.**
- **Hanger ratings > Smart Spring® @ 9 lb./hanger. Zipper® @ 22 lb./hanger.**

Cliprail2 System Components

Part#	Description	Group	Part#	Description	Group
STA-VC10200	Cliprail2 Track 78.75" - White	Track	STA-CP10115	Cable Perlon with Cobra End 59"	Cable
STA-VC30200	Cliprail2 Track 78.75" - Grey	Track	STA-CP10130	Cable Perlon with Cobra End 118"	Cable
ACC0000019-01	Screw, Flat Head #6x1.25"	Track Accessory	STA-SC10115	Cable - 59" steel with Cobra end	Cable
ACC0000020-01	Anchor, Plastic #6x1.00-1.50"	Track Accessory	STA-SC10130	Cable - 118" steel with Cobra end	Cable
STA-VE10200	Endcap Cliprail2 - White	Track Accessory	STA-HA30501	Hanger/Hook Zipper 22 Lb. Cap.	Hanger
STA-VD10400	Corner connector Cliprail2 white	Track Accessory	STA-HA30900	Hanger/Hook SmartSpring 9 Lb. Cap.	Hanger
STA-VE30200	Endcap Cliprail2 - Grey	Track Accessory			
STA-VD30400	Corner connector Cliprail2 grey	Track Accessory			
STA-RD40100	Brass Mounting Button	Track Accessory			
STA-RD40200	Buttjoint Track Connector Cliprail	Track Accessory			

- Track orders include all installation hardware> Brass buttons, screws, anchors, butt joint connectors and 1 set of endcaps per order (not per track). Order additional endcaps separately for multiple stand-alone section installations.
- All product ships from our Worcester, MA warehouse.

For current pricing, to order and for multimedia information visit <http://pictureframehanging.com>